
TEL: (501) 225-2014
(501) 225-2052
FAX: (501) 225-2533
AFS: MZBZYAYX
E-mail: belize.ais@civilaviation.gov.bz
WEB site: www.civilaviation.gov.bz
ADDRESS: P.O. BOX 367
BELIZE, C.A.

BELIZE
DEPARTMENT OF CIVIL AVIATION
AERONAUTICAL INFORMATION
SERVICE



AIC
C020/24
28th November 2024

VFR CORRIDORS

The Belize Department of Civil Aviation (BDCA) hereby notifies the aviation public that the testing phase for the VFR corridors has concluded. As a result, the use of VFR corridors becomes effective immediately.

****END. ****

All users are reminded to visit this AIS office in accordance with the national and international standards of ICAO

VISUAL CORRIDORS

MZBZ - MZBE - MZSP



All users are reminded to visit this AIS office in accordance with the national and international standards of ICAO

VISUAL CORRIDORS FIXES

FIX	LATITUD	LONGITUD
VC-1B		
LORDS	17°31'42.600"N	088°21'21.600"W
LAGOS	17°34'17.040"N	088°20'15.000"W
SHORE	17°44'02.400"N	088°13'12.000"W
ESPAN	17°53'14.280"N	088°04'28.200"W

VC-2B		
CANGR	17°52'11.640"N	088°02'55.320"W
SHICK	17°41'06.670"N	088°10'39.124"W
HIWAY	17°32'45.600"N	088°16'27.840"W

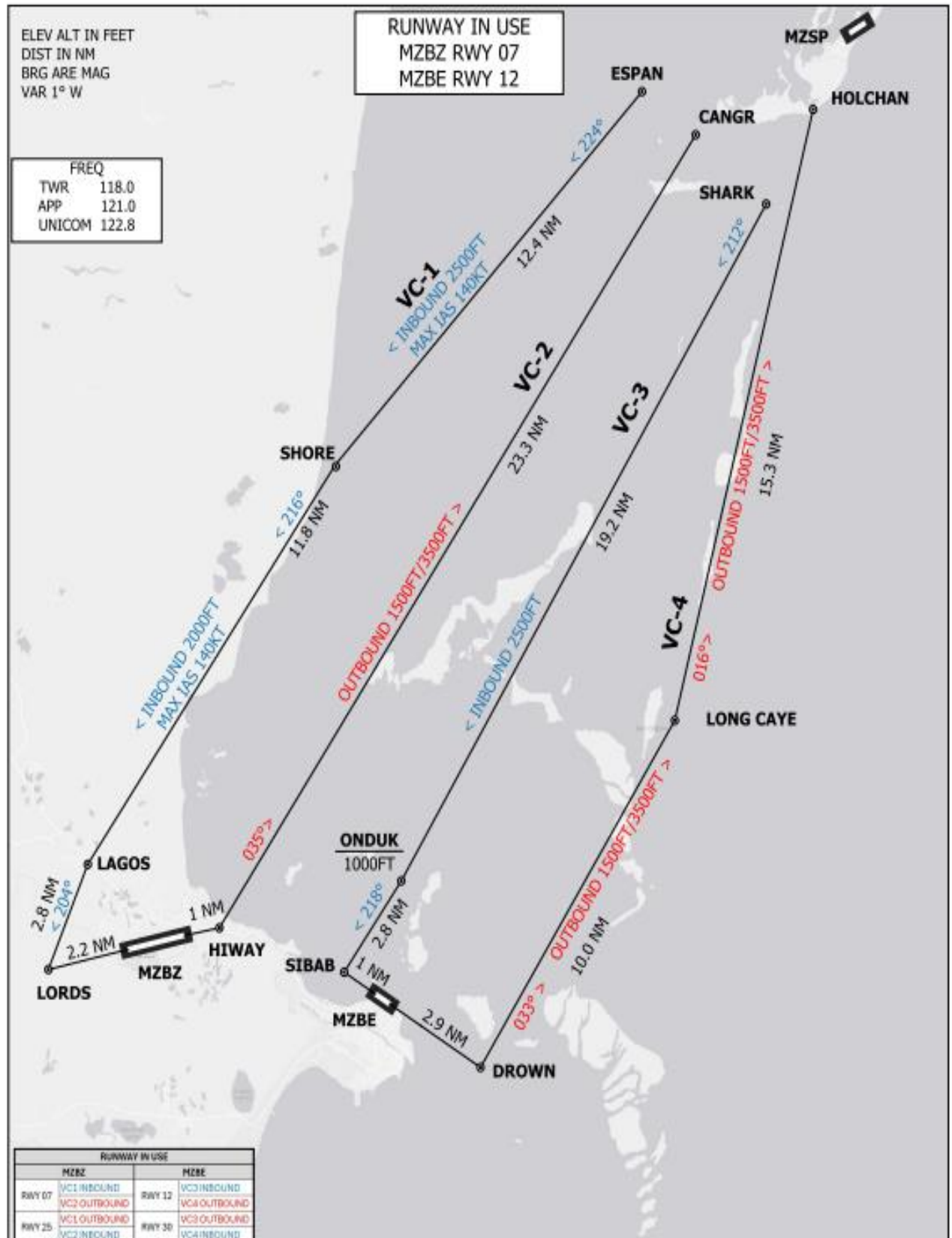
VC-3B		
SHARK	17°50'30.840"N	088°00'53.280"W
NHICK	17°41'57.664"N	088°05'03.129"W
PORTO	17°37'24.663"N	088°07'15.864"W
COFFE	17°32'51.636"N	088°09'28.489"W
BARAK	17°30'24.194"N	088°10'40.064"W

VC-4B		
SIBAB	17°31'42.010"N	088°12'52.834"W
BELAM	17°30'40.320"N	088°13'33.240"W
STAKE	17°28'27.840"N	088°09'33.840"W
DROWN	17°29'24.027"N	088°08'57.392"W
LONG CAYE	17°37'53.980"N	088°03'26.280"W
HOLCHAN	17°52'49.770"N	087°59'33.120"W

All users are reminded to visit this AIS office in accordance with the national and international standards of ICAO

VISUAL CORRIDORS

MZBZ - MZBE - MZSP



All users are reminded to visit this AIS office in accordance with the national and international standards of ICAO

VISUAL CORRIDORS FIXES

FIX	LATITUD	LONGITUD
VC-1		
ESPAN	17°53'14.280"N	088°04'28.200"W
SHORE	17°44'02.400"N	088°13'12.000"W
LAGOS	17°34'17.040"N	088°20'15.000"W
LORDS	17°31'42.600"N	088°21'21.600"W
VC-2		
HIWAY	17°32'45.600"N	088°16'27.840"W
CANGR	17°52'11.640"N	088°02'55.320"W
VC-3		
SHARK	17°50'30.840"N	088°00'53.280"W
ONDUK	17°33'56.304"N	088°11'15.405"W
SIBAB	17°31'42.010"N	088°12'52.834"W
VC-4		
DROWN	17°29'24.027"N	088°08'57.392"W
LONG CAYE	17°37'53.980"N	088°03'26.280"W
HOLCHAN	17°52'49.770"N	087°59'33.120"W

All users are reminded to visit this AIS office in accordance with the national and international standards of ICAO