
TEL: (501) 225-2014
(501) 225-2052
FAX: (501) 225-2533
AFS: MZBZYAYX
E-mail: belize.ais@civilaviation.gov.bz
WEB site: www.civilaviation.gov.bz
ADDRESS: P.O. BOX 367
BELIZE, C.A.

BELIZE
DEPARTMENT OF CIVIL AVIATION
AERONAUTICAL INFORMATION
SERVICE



AIC
C016/24
27th SEPT 2024

VFR CORRIDORS

The Belize Department of Civil Aviation (BDCA) hereby notifies the aviation public that the testing phase of the VFR corridors has been extended up to the **26th October, 2024**. This test phase aims to evaluate the effectiveness and practicality of the corridors in optimizing air traffic flow.

Your cooperation and feedback during this testing period are essential for enhancing the overall safety and efficiency of air traffic when there are high volumes of VFR traffic.

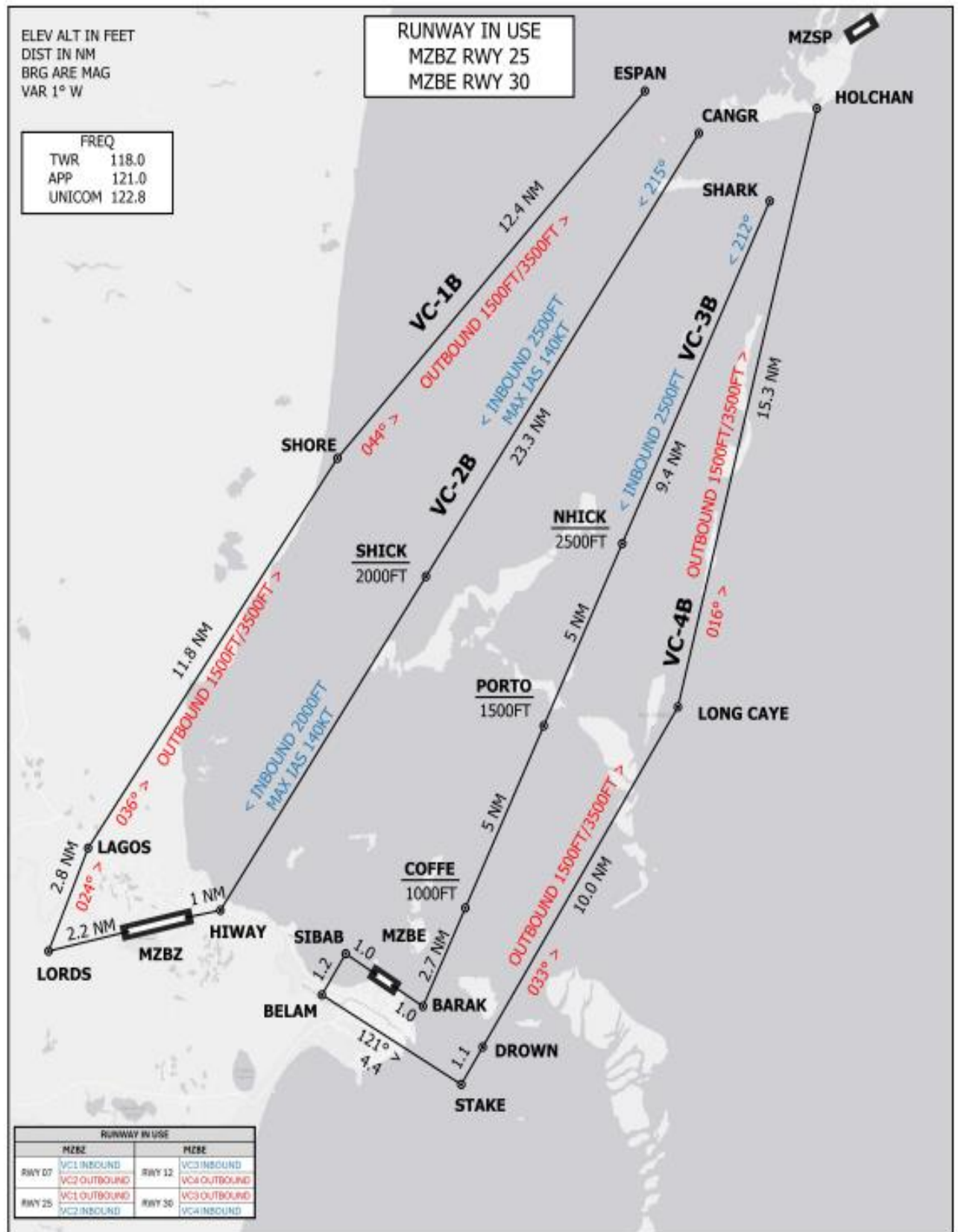
This AIC C016/24 replaces AIC C008/24

****END. ****

All users are reminded to visit this AIS office in accordance with the national and international standards of ICAO.

VISUAL CORRIDORS

MZBZ - MZBE - MZSP



All users are reminded to visit this AIS office in accordance with the national and international standards of ICAO.

VISUAL CORRIDORS FIXES

FIX	LATITUD	LONGITUD
VC-1B		
LORDS	17°31'42.600"N	088°21'21.600"W
LAGOS	17°34'17.040"N	088°20'15.000"W
SHORE	17°44'02.400"N	088°13'12.000"W
ESPAN	17°53'14.280"N	088°04'28.200"W

VC-2B		
CANGR	17°52'11.640"N	088°02'55.320"W
SHICK	17°41'06.670"N	088°10'39.124"W
HIWAY	17°32'45.600"N	088°16'27.840"W

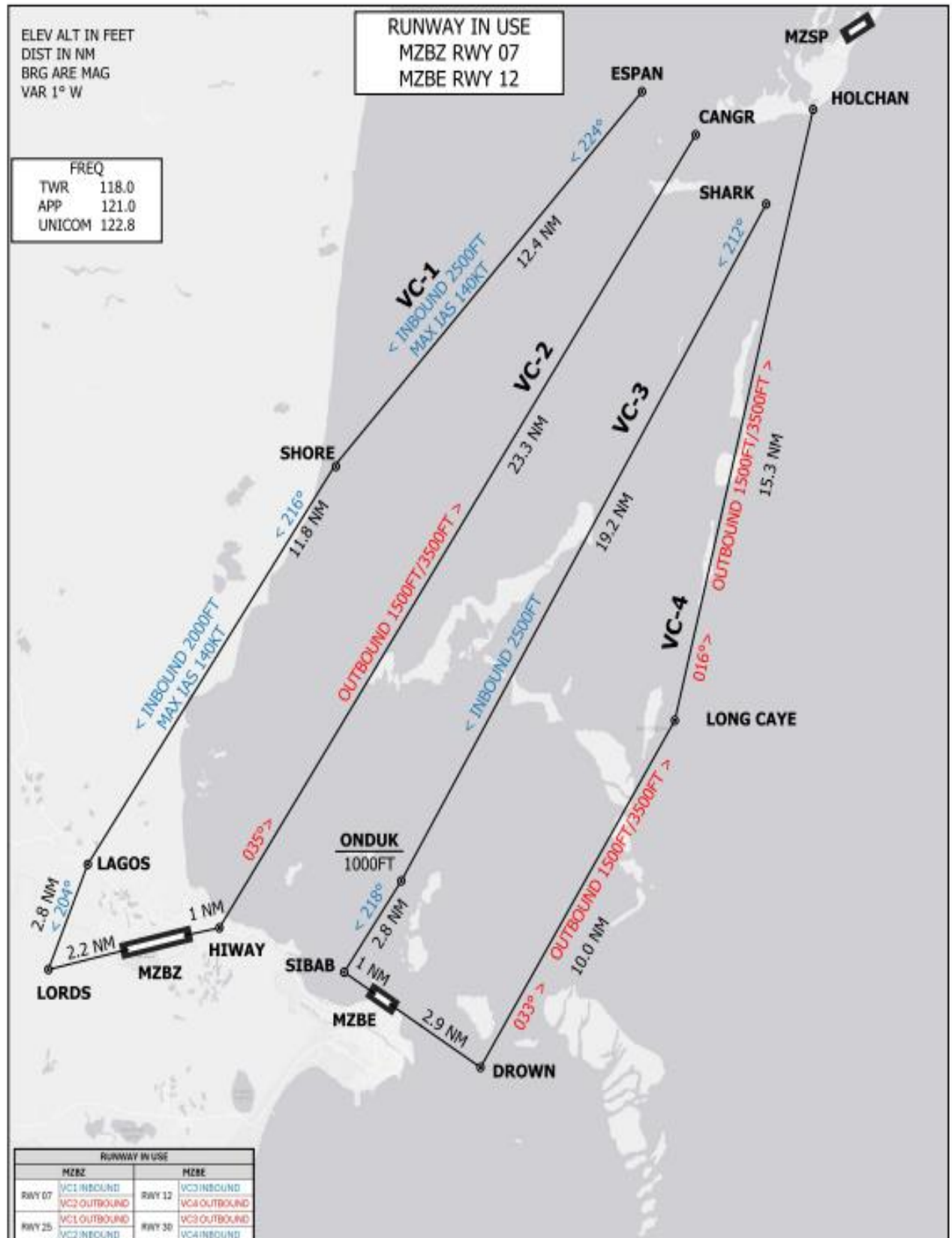
VC-3B		
SHARK	17°50'30.840"N	088°00'53.280"W
NHICK	17°41'57.664"N	088°05'03.129"W
PORTO	17°37'24.663"N	088°07'15.864"W
COFFE	17°32'51.636"N	088°09'28.489"W
BARAK	17°30'24.194"N	088°10'40.064"W

VC-4B		
SIBAB	17°31'42.010"N	088°12'52.834"W
BELAM	17°30'40.320"N	088°13'33.240"W
STAKE	17°28'27.840"N	088°09'33.840"W
DROWN	17°29'24.027"N	088°08'57.392"W
LONG CAYE	17°37'53.980"N	088°03'26.280"W
HOLCHAN	17°52'49.770"N	087°59'33.120"W

All users are reminded to visit this AIS office in accordance with the national and international standards of ICAO.

VISUAL CORRIDORS

MZBZ - MZBE - MZSP



All users are reminded to visit this AIS office in accordance with the national and international standards of ICAO.

VISUAL CORRIDORS FIXES

FIX	LATITUD	LONGITUD
VC-1		
ESPAN	17°53'14.280"N	088°04'28.200"W
SHORE	17°44'02.400"N	088°13'12.000"W
LAGOS	17°34'17.040"N	088°20'15.000"W
LORDS	17°31'42.600"N	088°21'21.600"W
VC-2		
HIWAY	17°32'45.600"N	088°16'27.840"W
CANGR	17°52'11.640"N	088°02'55.320"W
VC-3		
SHARK	17°50'30.840"N	088°00'53.280"W
ONDUK	17°33'56.304"N	088°11'15.405"W
SIBAB	17°31'42.010"N	088°12'52.834"W
VC-4		
DROWN	17°29'24.027"N	088°08'57.392"W
LONG CAYE	17°37'53.980"N	088°03'26.280"W
HOLCHAN	17°52'49.770"N	087°59'33.120"W

All users are reminded to visit this AIS office in accordance with the national and international standards of ICAO.